



Passagem Roxtec SwanNeck

Passagem de cabos e tubos com moldura estendida para aparafusamento em telhados.

A passagem Roxtec Swan Neck foi projetada para instalações em telhados. Possui uma estrutura flangeada estendida com uma ou duas aberturas para vedação de um ou vários cabos e tubos de diferentes tamanhos.



- Resistente a roedores
- Rápido e fácil de instalar

Características do produto



IP/UL NEMA

Estrutura da instalação



Metal

Tipo de montagem



Aparafusada

Classificações e certificados

Proteção contra vazamento

- IP 54

Dimensões da moldura

mm/kg

As variantes de molduras abaixo são uma seleção limitada. Para a gama completa de molduras e configurações, acesse [roxtec.com](https://www.roxtec.com).

Título	Aberturas da moldura	Espaço de montagem	Dimensões externas WxHxD	Dimensões da abertura w x h	Peso	Art. No.
SWAN NECK 6x1 GALV INCL GASKET			269 x 454 x 459	145(+5/-0) x 245(+5/-0)	18.4	5S00000002695
SWAN NECK 6x2 GALV INCL GASKET			399 x 454 x 459	280(+5/-0) x 245(+5/-0)	25.4	5G00000002001

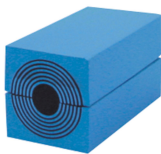


Dados de componente de vedação

Componentes de vedação



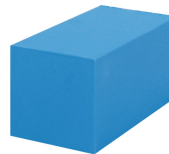
Lubrificante Roxtec



Módulo RM com Multidiameter™



Cunha e Kit de Cunhas Roxtec



Módulo de compensação sólida RM



Placa de separação Roxtec



Kit de vedação Roxtec

Para obter informações detalhadas, acesse [roxtec.com](https://www.roxtec.com).

The product information provided by Roxtec does not release the purchaser of the Roxtec system, or part thereof, from the obligation to independently determine the suitability of the products for the intended process, installation and/or use.

Roxtec gives no guarantee for the Roxtec system or any part thereof and assumes no liability for any loss or damage whatsoever, whether direct, indirect, consequential, loss of profit or otherwise, occurred or caused by the Roxtec systems or installations containing components not manufactured by an authorized manufacturer and/or occurred or caused by the use of the Roxtec system in a manner or for an application other than for which the Roxtec system was designed or intended.

Roxtec expressly excludes any implied warranties of merchantability and fitness for a particular purpose and all other express or implied representations and warranties provided by statute or common law. User determines suitability of the Roxtec system for intended use and assumes all risk and liability in connection therewith. In no event shall Roxtec be liable for indirect, consequential, punitive, special, exemplary or incidental damages or losses.

The Roxtec products are offered and sold in accordance with the conditions of the Roxtec General Terms of Sales. The latest version of the Roxtec General Terms of Sales can be downloaded from <https://www.roxtec.com/en/about-us/about-roxtec/general-terms-of-sales/>

We reserve the right to make changes to the product and technical information without further notice. Any errors in print or entry are no claims for indemnity. The content of this publication is the property of Roxtec International AB and is protected by copyright.

This document was generated on: 2024-04-26